

Options

Fixed head

Flush fit LED fixed heads

Aqualisa Products Limited, The Flyer's Way, Westerham, Kent TN16 1DE

Customer Helpline: 01959 560010 Facsimile: 01959 560030

Website: www.aqualisa.co.uk E-mail: enquiries@aqualisa.co.uk

Important information



This product must be installed by a competent person in accordance with the relevant current Water Supply Regulations.

This product is only suitable for use with Aqualisa Digital products.

ALL SHOWERS REQUIRING AN ELECTRICAL CONNECTION MUST BE INSTALLED BY A QUALIFIED PERSON FOLLOWING THE LATEST REVISION OF BS 7671 (WIRING REGULATIONS) AND CERTIFIED TO CURRENT BUILDING REGULATIONS. REFER TO PART P OF THE BUILDING REGULATIONS.

Electrical supply and bonding of the bathroom must comply with current IEE regulations with your attention particularly drawn to the requirements concerning protective earth bonding.

This product is not intended for use by persons (including children) with reduced physical, sensory or mental capabilities or a lack of experience and knowledge, unless they have been given initial supervision or instruction concerning the use of the product by a person responsible for their safety.

Children should be supervised to ensure they do not play with the product.

This unit must not be installed in situations where the ambient temperature is likely to fall below 5° C or rise above 40° C.

MIN pressure 0.1 MPa (1 bar) dynamic high pressure or pumped system.

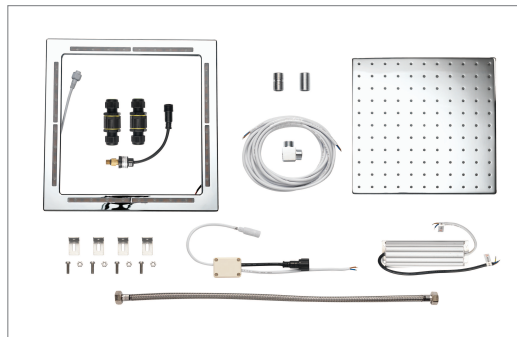
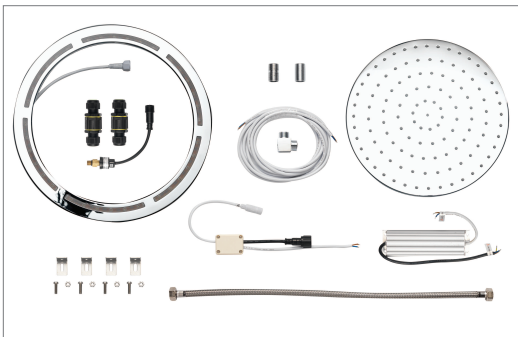
MAX pressure 0.5 MPa (5 bar) dynamic high pressure or pumped system.

Cables which are chased into the wall must be protected by the use of conduit or sheathing.

The Aqualisa Options range of accessories are supplied complete with a 2 year guarantee.

In the event of any product problems, please contact the Aqualisa Customer Helpline on 01959 560010.

Components – Flush fit LED fixed heads



!!!

For optimum ease of installation, consideration should be taken as to first installing a false ceiling within the showering area site.

The flush fit LED fixed head is supplied with suitable fixings.

Ensure that the ceiling is capable of bearing the weight of 5kg including water content. Ceiling thickness maximum is 17mm. Minimum requirement for space above where head will be flush mounted is 200mm.

1

Using the LED mounting as a template, place in the desired location, mark and cut a suitable hole in the ceiling.

Round head Ø350mm

Square head 350mm x 350mm



2

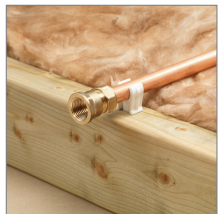
Site the transformer within 3 meters of the shower head. Ensure that there is free air movement around the transformer housing. Do not fit close to heating or hot water pipes as the transformer has a maximum operating temperature of 40° C. If the transformer is to be sited in the bathroom area, it must be sited away from the bather behind a screw panel. Suitable electrical conduit should be used to protect exposed or concealed cables.

!

DO NOT MAKE ANY ELECTRICAL CONNECTIONS AT THIS POINT.

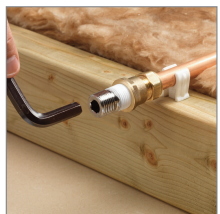
3

Prepare and run the pipe work from the shower outlet to the proposed shower head site, terminating with a 1/2" female thread.



4

Wrap the 1/2" threaded connector with suitable sealing tape. Screw the connector into the 1/2" threaded female connection using a 10mm Allen key.



5

Fit the LED mounting into place, using a flat bladed screwdriver and a 10mm spanner to tighten the nuts and bolts into the L-shaped brackets provided.



Ensure the bolts face out towards the roof space – not in towards the space for the fixed head.



6

Secure the pressure switch adaptor to the shower head.



7

Connect the blended supply pipe to the shower head assembly using the flexible braided hose provided.



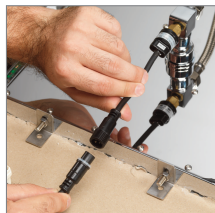
8

Ensuring the O'ring is in the correct position, connect the pressure switch to the fixed head/pressure switch adaptor assembly.



9

Plug the black plastic pressure switch connector into the black plastic PCB box connector, ensuring the arrows align and the white rubber O'ring is in place. Tighten the outer cover by screwing into place.



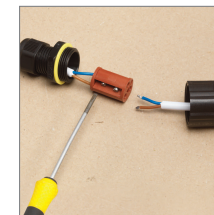
10

Plug the white plastic connector on the LED mounting into the white plastic connector from the PCB box, ensuring the arrows align and the white rubber O'ring is in place. Tighten the outer cover by screwing into place.



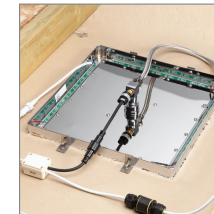
11

Make the electrical connection using the black waterproof connector assembly block provided, (use both, plus the extension lead provided, if required). Secure the outer cover together ensuring the yellow washers are in place.



12

Fit the shower head into place within the LED mounting.



13

Check the installation for leaks.

14

The 240 Volt mains supply to the transformer may be taken from the domestic lighting or power ring main via an approved double-pole switched fused spur outlet incorporated in the fixed wiring circuit in accordance with the current wiring rules. The value of the fused spur must not exceed 3 amps. Should the transformer cable suffer any mechanical damage, it will be necessary to replace the complete transformer assembly.

Use only the transformer supplied, Model: VWN1200SELV.

If damaged, please contact Aqualisa Customer Services for an identical replacement.



THE POWER SUPPLY TO THE FIXED HEAD LED RIM MUST BE ISOLATED BEFORE REINSTATING THE DOMESTIC ELECTRICAL SUPPLY. ALL COPPER PIPEWORK MUST BE CROSS BONDED AND CONNECTED TO A RELIABLE EARTHING POINT.