

Bath

Overflow filler



Components



Important information

This product must be installed by a competent person in accordance with the current Water Supply Regulations.

If an alternative bath outlet or bath spout with hand shower combination is used, due to the restrictive characteristics of some of these products, outlet flow rate may be affected. Aqualisa Products Ltd cannot guarantee outlet flow rate if an alternative outlets solution is used. Please refer to the manufacturer's installation guide for full fitting instructions.

Aqualisa Products Ltd reserves the right to revoke the guarantee if an overhead shower kit system is fitted with a bath controller.

Step-by-step instructions



The bath overflow filler is suitable for baths up to a maximum thickness of 24mm.

1

Carefully unscrew and remove the overflow filler outlet from the body assembly and set aside.



2

Carefully unscrew and remove the bath waste clicker assembly from the waste body and set aside.



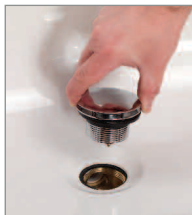
3

Offer the bath waste into position ensuring the rubber washer is correctly aligned between the waste assembly and the bath base.



4

Ensuring the rubber washer is correctly aligned, pass the bath waste clicker through the bath and secure to the waste body assembly.



5

Connect the bath waste to a suitable waste pipe.

6

Offer the outlet body assembly into position at the rear of the bath ensuring the rubber washer is correct aligned between the outlet body assembly and bath wall.



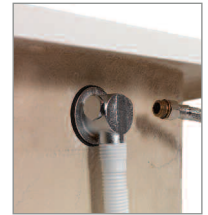
7

Ensuring the rubber washer is correctly aligned, pass the overflow filler outlet through the bath and secure to the body assembly.



8

Remove the relevant inlet blanking plug and attach the flexible hose to the blended inlet connection.



9

Connect the flexible hose to the blended supply pipe ensuring suitable non restrictive double check valves are fitted in line with current Water Supply Regulations (not supplied).

Step-by-step instructions

Waste pipe extension kit

! If required, for larger baths, a 900mm waste pipe conversion kit is available from Aqualisa Customer Service department, part number 477502.

1 Unscrew the clamping nut and remove the waste pipe from the waste assembly.



2 Remove the clamping nut and sealing washer from the waste pipe and set aside.

3 Carefully pull the waste pipe away from the outlet assembly.



4 Reassemble the unit using the longer waste pipe by reversing the above procedure.

User Guide

Bath overflow filler user guide

1 Push the waste cover to engage the plug fitting.

2 Push the waste cover again to disengage the plug fitting.



Cleaning

The bath overflow filler system should be cleaned using only a soft cloth and washing up liquid.

DO NOT USE ABRASIVE CLEANERS.